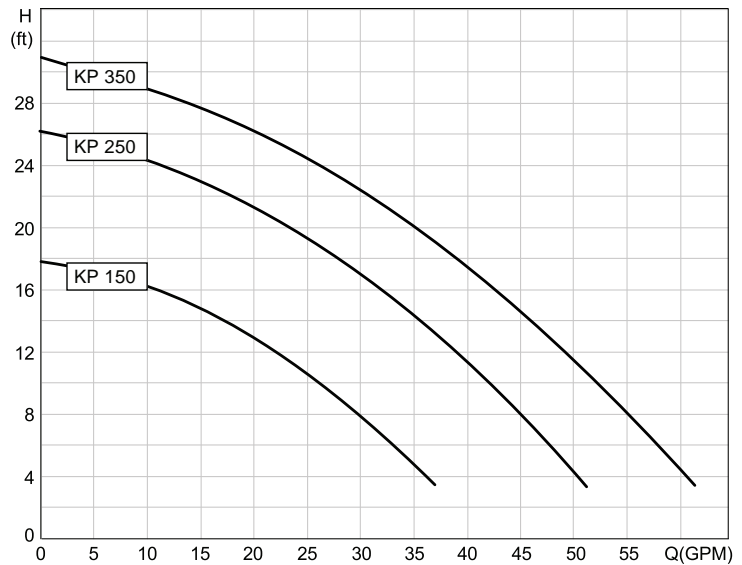




Performance Curve



Electrical Data

Pump Type	HP	Service Factor	PH	Input Voltage	Maximum Power Consumption (Watts)	Maximum Current (Amps)	Locked Rotor Current (Amps)	Nominal Speed (Rpm)
KP150	1/4	1.6	1	115	300	2.9	8.7	3350
KP250	1/3	1.6	1	115	480	4.9	14.5	3350
KP350	1/2	1.6	1	115	800	7.5	21.4	3350

Technical Data

Performance Range:

- Flow: 0.5 - 62 GPM
- Head: 0 - 31 ft.

Solids Handling:

- 3/8" Spherical Solids

Motor Type:

- AC Induction
- Water/Glycol Filled (SML 2)
- Class F Insulation

Motor Duty:

- Semi-Continuous if fully submerged
- Max. 8 hours in a 24 hour period

Starts Per Hour:

- 10

Minimum Liquid Level (Above Bottom of Pump):

- Manual Operation:
 - With Suction strainer: 1.0 inches
 - Without suction strainer: 0.5 inches
- Automatic operation:
 - KP 150, KP 250: 3.5 inches
 - KP 350: 4.0 inches

pH Range:

- 4 to 9

Thermal Protection:

- Internal resetting

Fluid Temperature Limits: (Totally Submerged)

- 32° - 122°F (0° - 50°C) Semi-Continuous*
- 32° - 158°F (0° - 70°C) Intermittent

Discharge Size:

- 1-1/4" Female NPT

Impeller Design:

- Semi-Open

Maximum Installation Depth Below Water Level:

- 30 ft.

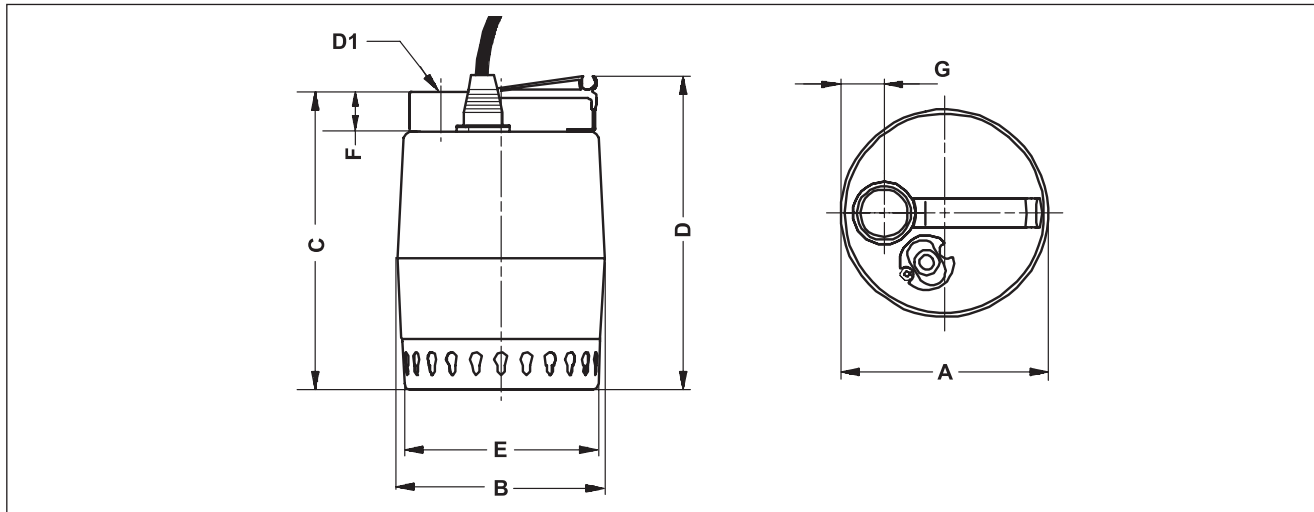
Approvals:

- CSA Approved
- UL Listed

Length of Power Cord:

- 10 or 25 ft.

Dimensional Drawing



Dimensions and Weights

Pump Type	Motor Data				D1 Discharge NPT	Dimensions (Inches)							Ship Wt. (lbs.)	Ship Vol. (cu. ft.)
	HP	S.F.	PH	Volts		A	B	C	D	E	F	G		
KP150	1/4	1.6	1	115	1-1/4"	5-7/8	5-7/8	8-7/16	8-7/8	5-9/16	1-3/16	1-1/4	15	0.5
KP250	1/3	1.6	1	115	1-1/4"	5-7/8	5-7/8	8-7/16	8-7/8	5-9/16	1-3/16	1-1/4	16	0.5
KP350	1/2	1.6	1	115	1-1/4"	5-7/8	5-7/8	8-11/16	9-1/8	5-9/16	1-3/16	1-1/4	18	0.5

Materials of Construction

Description	Material
Pump Housing	304 SS
Strainer	304 SS
Impeller	304 SS
Shaft	431 SS
Fasteners, Wear Plate, Lock Nut, Washer	304 SS
Bearings	Compounded Carbon
Seal Rings	NBR
Power Cord Jacket	Neoprene
Grommet	Neoprene
Motor Fluid	Water/Glycol Filled (SML 2)